

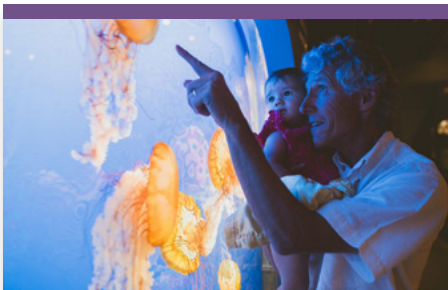
# PACIFIC MARINE CIRCLE ROUTE

*the West Coast's west coast*

## *Sidney to Victoria to Cowichan*

**81.5KM / 50.7MILES - 1 hr 18 min**

Southern Vancouver Island packs in more to do, see, read, eat and drink than you can possibly imagine. With bookstores, breweries, bakeries and breathtaking views at every turn, Sidney to Victoria to Cowichan is a trip you can't miss.



### THINGS TO DO

Things to do: Sample spirits at **Victoria Distillers**, cruise the Salish Sea with **Sidney Whale Watching**, discover your new favourite boutique in Sidney's shopping district, peek below the sea at the **Shaw Centre for the Salish Sea** and wander along the waterfront sculpture walk, treat yourself to a visit to **Haven Spa**, sample sweet island honey at **Urban Bee Honey Farm**, hike through an old-growth forest in **Goldstream Provincial Park** or explore the historic **Kinsol Trestle**, a 44m tall, free-standing timber rail structure.



### WHERE TO EAT

Indulge in European style bites at **The Farmer's Daughter Fromagerie** or take a picnic to bring along on your days adventure. Enjoy a seaside bite at **Haro's** or along your drive at **Bridgeman's Bistro**. Savour home-style, Canadian comfort food with sweeping views of the Saanich Inlet at **Malahat Chalet** or try seasonally inspired food and drink at **Merridale Cidery & Distillery**. Wine enthusiasts can explore nearby vineyards, such as **Averill Creek Vineyard**, **Blue Grouse Estate Winery**, **Unsworth Vineyards** and **Rocky Creek Winery**.



### WHERE TO STAY

Spend a night by the sea at **The Sidney Pier Hotel & Spa** or **Beacon Inn**. Recharge after a day exploring at the **Moon Water Lodge** or the **Villa Eyrie Resort** for elevated views, orchard-side in a yurt at **Merridale Cidery & Distillery** or from one of 16 cozy bed and breakfasts belonging to the **Cowichan Valley Bed and Breakfast Association**.